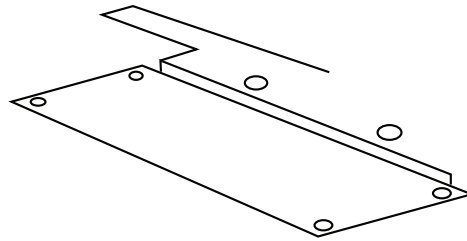


What's in the box: 1 **MAGIC SCREEN**, 6 wires, 1 **EASY SOLDERING GUIDE**, 1 3.5"LCD screen et 2 brackets.

Needed tools: Soldering iron, gambit and cross-headed screwdriver, scissors and electronic cutting pliers.
A multimeter can also be useful without being indispensable.

MAGIC SCREEN 1.0 AND EASY SOLDERING GUIDE 1.0 **INSTALLATION GUIDE FOR SEGA GAME GEAR MODEL VA1**



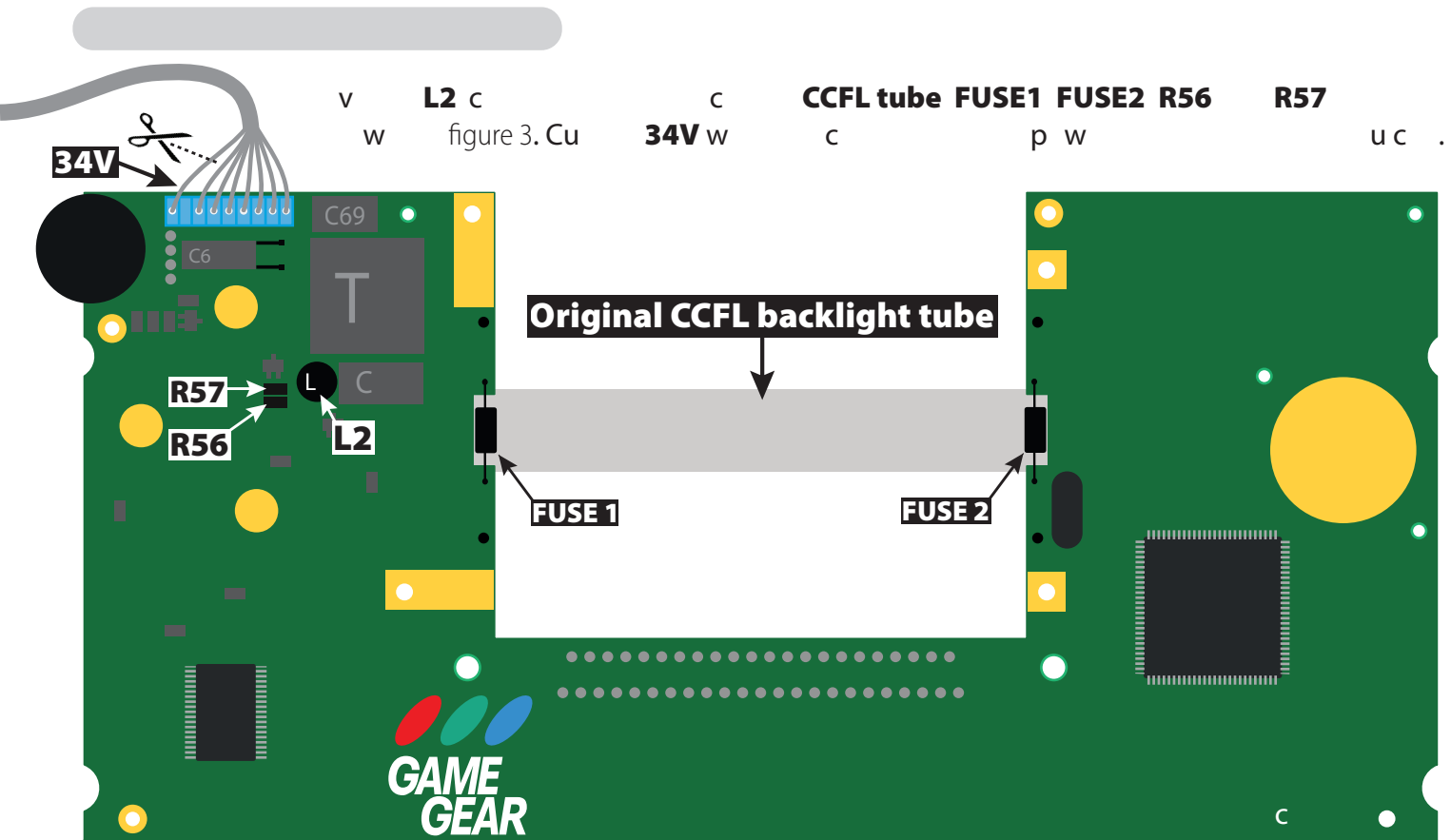


Figure 3

EASY SOLDERING GUIDE

1, CL2, D0, D1, D2, D3, DW, 68 w (see figure 4)

figure 4 w p

(bevel tip recommended)

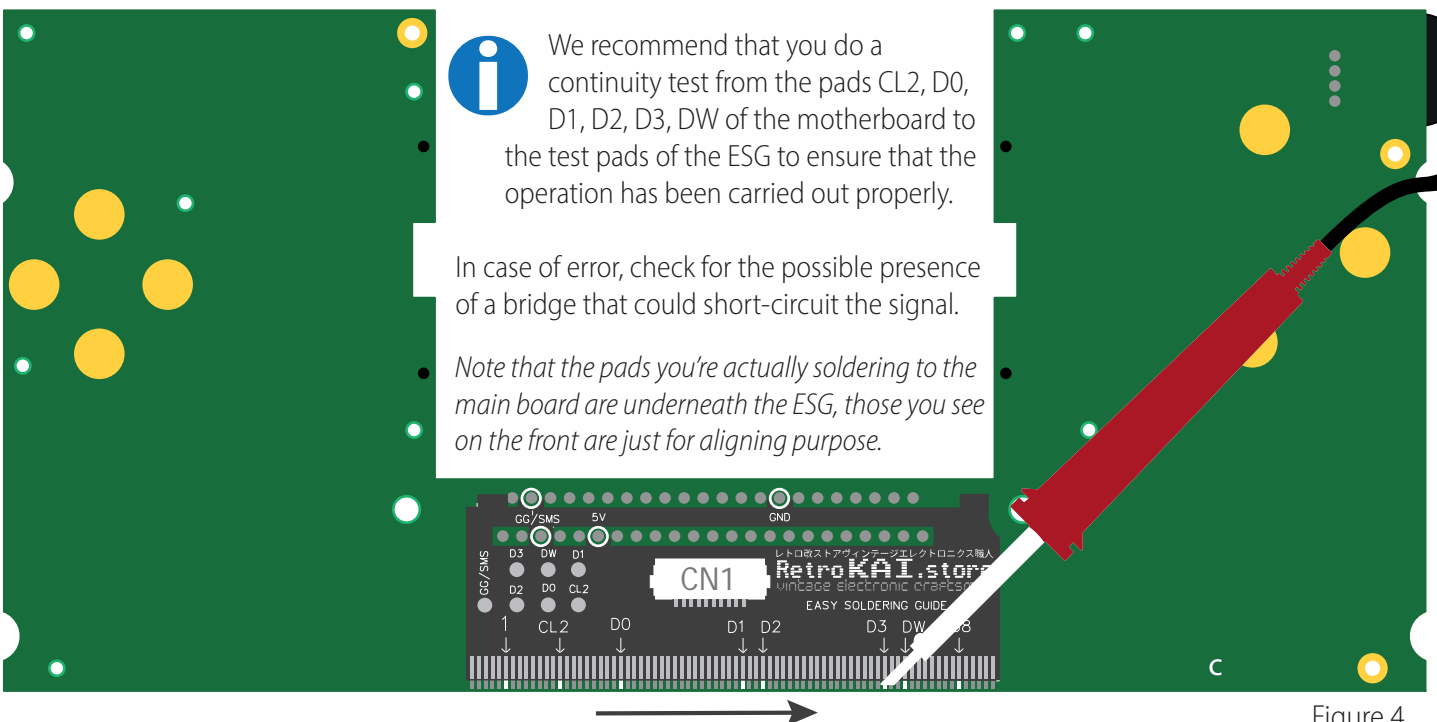


Figure 4

MAGIC SCREEN

Place the circuit board as shown in figure 5 without fixing it for the moment. Solder 2 wires to connect points **BL1** and **BL2** (unless you prefer to do it on the back side) and then connect the gray ribbon to the 2 **CN1** connectors located on the

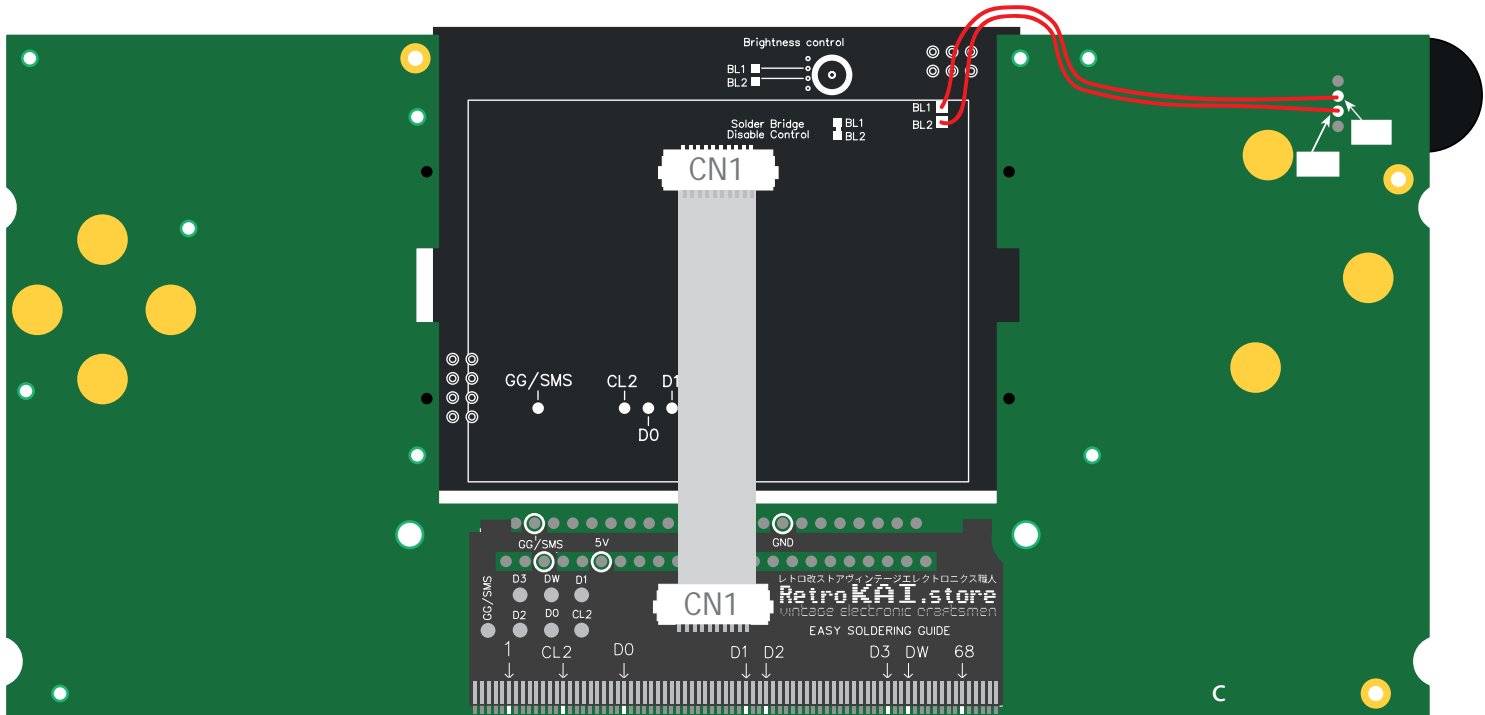


Figure 5

Place the two brackets as shown in figure 6 so that they will enclose the LCD screen and then place the assembly on the Game Gear motherboard, aligning the holes on the brackets with the holes on the motherboard as shown in figure 7.

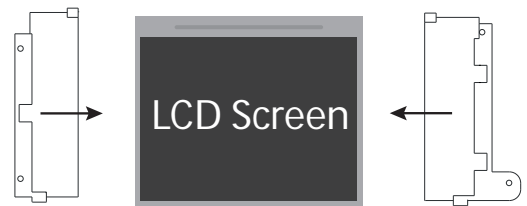


Figure 6

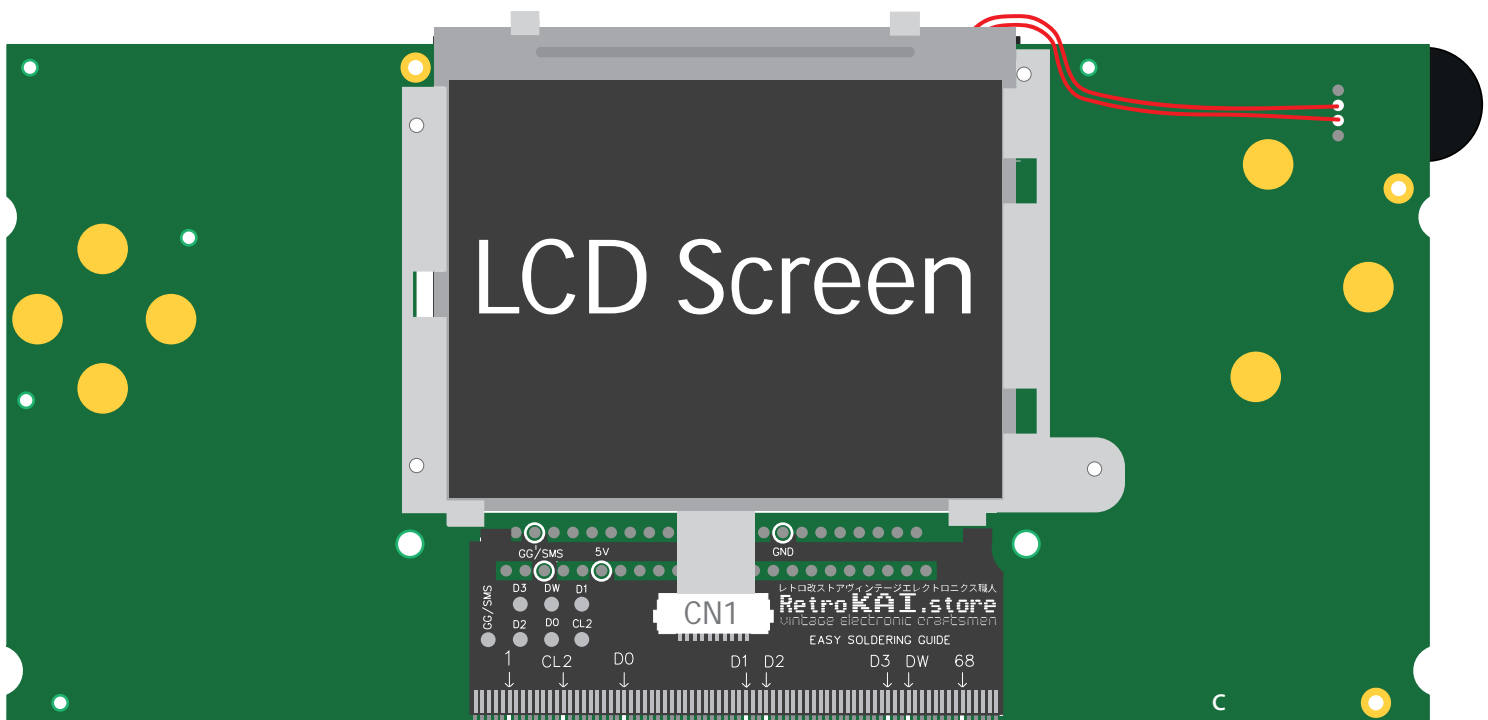


Figure 7

